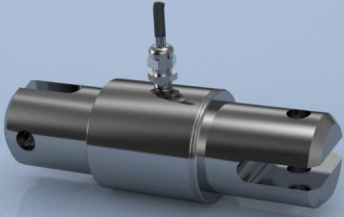


## TYPE: TOG



# TOG Stainless Steel Toggle Load Link

## Description

The LCM range of tension toggle load links have been designed for general use and are particularly suitable for permanent installations where wire loads are being measured. They are built to exacting standards and are suitable for use in exposed situations and can be supplied to withstand immersion in seawater.


The TOG range can be supplied as shown in this datasheet or can be modified to meet a particular application requirement. We are always pleased to discuss any special requirements that can be accommodated.

The TOG series can be supplied on its own or combined with our extensive range of instrumentation to provide a complete load monitoring system

## Specification

Rated load (kg)	750, 1500, 2000, 3250, 4750, 6500 8500, 9500	
Proof load	200% of rated load	
Ultimate breaking load	>300 % of rated load	
Output	1.0 mV/V at rated load ( $\pm 10\%$ )	
Accuracy	$< \pm 0.25\%$ of rated load	
Non-repeatability	$< \pm 0.05\%$ of rated load	
Excitation voltage	10vdc recommended, 15vdc maximum	
Bridge resistance	350 $\Omega$	
Insulation resistance	>500M $\Omega$ @ 500vdc	
Operating temperature range	-20 to +70°C	
Compensated temperature range	-10 to +50°C	
Zero temperature coefficient	$< \pm 0.01\%$ of rated load/°C	
Span temperature coefficient	$< \pm 0.01\%$ of rated load/°C	
Environmental protection level	IP67	
Connection type	5 metres PUR 4-core cable	
Wiring connections	+ve supply: Red	-ve supply: Blue
	+ve signal: Green	-ve signal: Yellow

## Available Options

- Special ranges and sizes available
- Special electrical connections
- Can be supplied with integral signal conditioning
- TEDS option (when used with TR150 handheld display)
- ATEX version available 

## Features

- Ranges: 750 to 9500 kg
- Stainless steel construction (17-4PH)
- Fork/eye, eye/eye or fork/fork configuration available
- Environmentally sealed to IP67
- Special sizes and ranges available
- Can be supplied with amplified output
- Can be supplied with integral connector

## Typical Applications

- Structural testing
- Mooring/towing monitoring
- Wire rigging tension monitoring
- Wireline measurement
- Anchor line tension monitoring

### LCM Systems Ltd

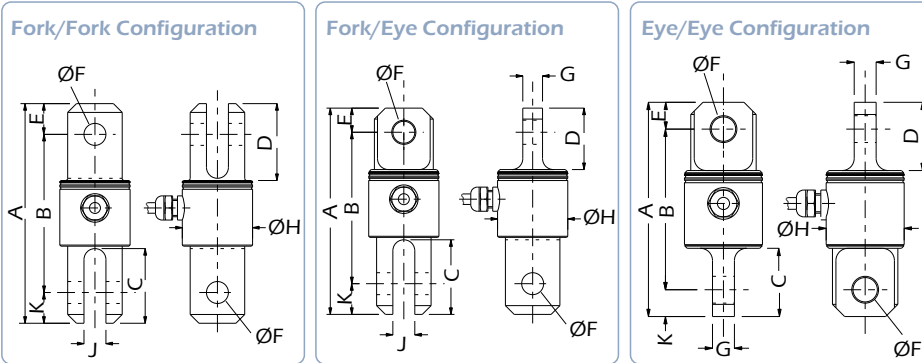
Unit 15, Newport Business Park  
Barry Way, Newport  
Isle of Wight PO30 5GY UK  
Tel: +44 (0)1983 249264  
Fax: +44 (0)1983 249266  
sales@lcmssystems.com  
www.lcmssystems.com

# TOG Stainless Steel Toggle Load Link



## Dimensions

All dimensions are in mm



### Fork/Fork Configuration

Rating (kg)	A	B	C	D	E	ØF	ØH	J	K	Weight (kg)	Resolution (kgs)
750	100	75	34	34	2.5	10	32	10	12.5	0.3	0.5
1500	116	84	43	43	16	13	32	13	16	0.4	1
2000	173	122	68	68	25.5	16	50	16	25.5	0.7	2
3250	193	135	67	67	29	20	50	20	29	1.5	2
4750	218	155	80	80	31.5	23	63	23	31.5	2.1	5
6500	240	170	93	93	35	26	63	26	35	2.8	5
8500	280	200	122	112	40	29	74	30	40	3.4	5
9500	280	200	122	112	40	32	74	30	40	3.7	10

### Fork/Eye Configuration

Rating (kg)	A	B	C	D	E	ØF	G	ØH	J	K	Weight (kg)	Resolution (kgs)
750	100	75	34	28	11	10	9	32	10	14	0.3	0.5
1500	116	84	43	35	16	13	12	32	13	16	0.4	1
2000	173	122	68	60	20	16	15	50	16	31	0.7	2
3250	193	135	67	60	27	20	19	50	20	31	1.5	2
4750	218	155	80	73	32	23	23	63	23	31	2.1	5
6500	240	170	93	80	33	26	24	63	26	37	2.8	5
8500	280	200	122	90	38	29	30	74	30	42	3.4	5
9500	280	200	122	90	38	32	30	74	30	42	3.7	10

### Eye/Eye Configuration

Rating (kg)	A	B	C	D	E	ØF	G	ØH	K	Weight (kg)	Resolution (kgs)
750	100	78	28	28	11	10	9	32	11	0.3	0.5
1500	116	84	35	35	16	13	12	32	16	0.4	1
2000	173	133	60	60	20	16	15	50	20	0.7	2
3250	193	139	60	60	27	20	19	50	27	1.5	2
4750	218	154	73	73	32	23	23	63	32	2.1	5
6500	240	174	80	80	33	26	24	63	33	2.8	5
8500	280	204	90	90	38	29	30	74	38	3.4	5
9500	280	204	90	90	38	32	30	74	38	3.7	10

www.lcmsystems.com



### SCIGATE AUTOMATION (S) PTE LTD

No.1 Bukit Batok Street 22 #01-01 Singapore 659592  
 Tel: (65) 6561 0488 Fax: (65) 6562 0588  
 Email: sales@scigate.com.sg Web: www.scigate.com.sg  
 Business Hours: Monday - Friday 8.30am - 6.15pm

Due to continual product development, LCM Systems Ltd reserves the right to alter product specifications without prior notice.

Issue No. 2

Issue date: 15/01/2015

APPROVED

(unapproved if printed)